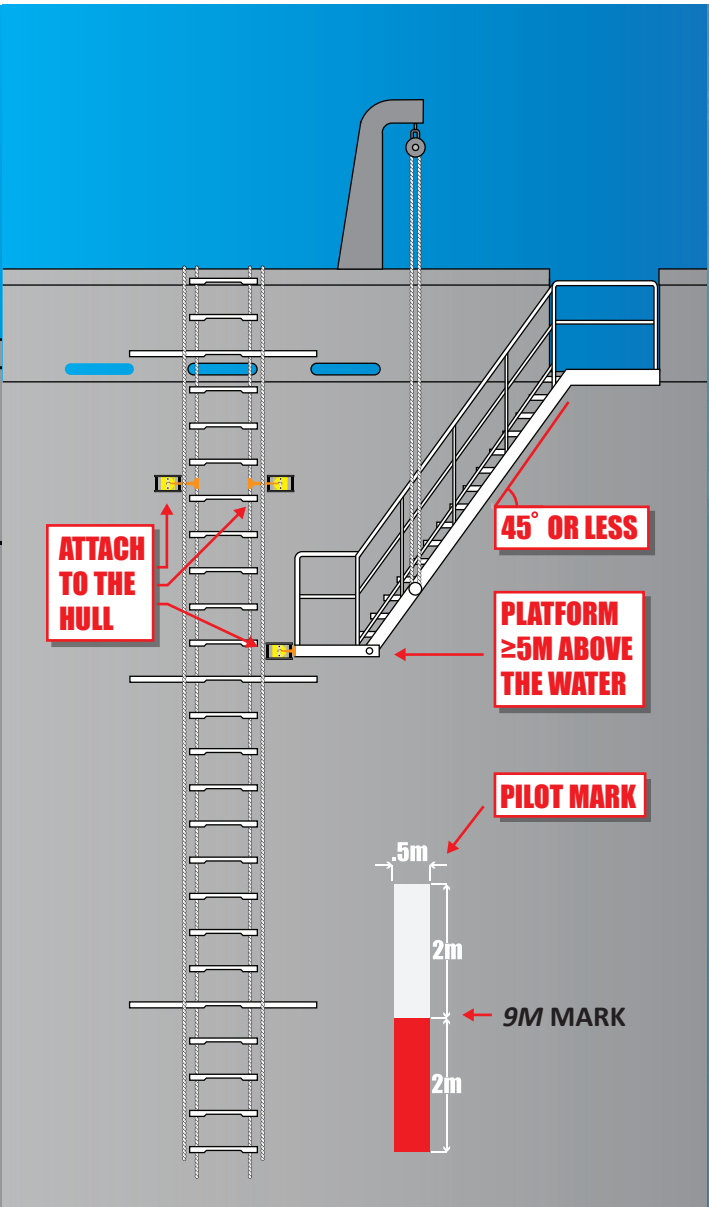
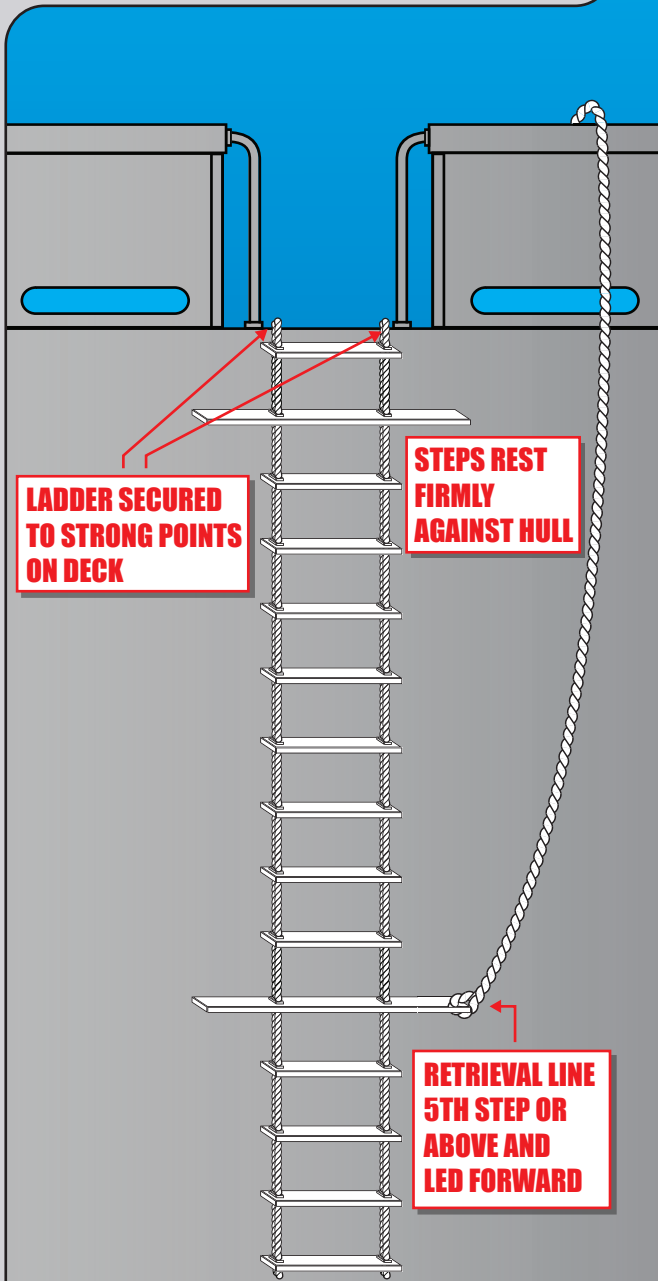
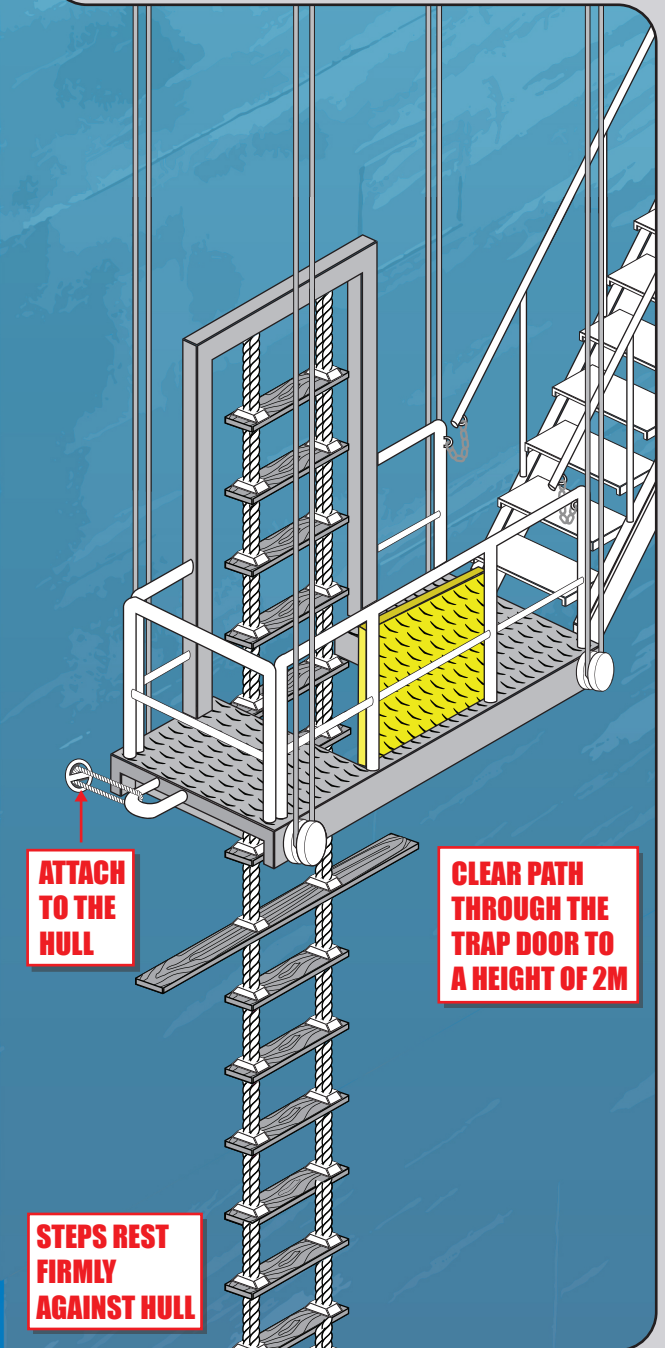


# Point of Access is 9 Meters or Less

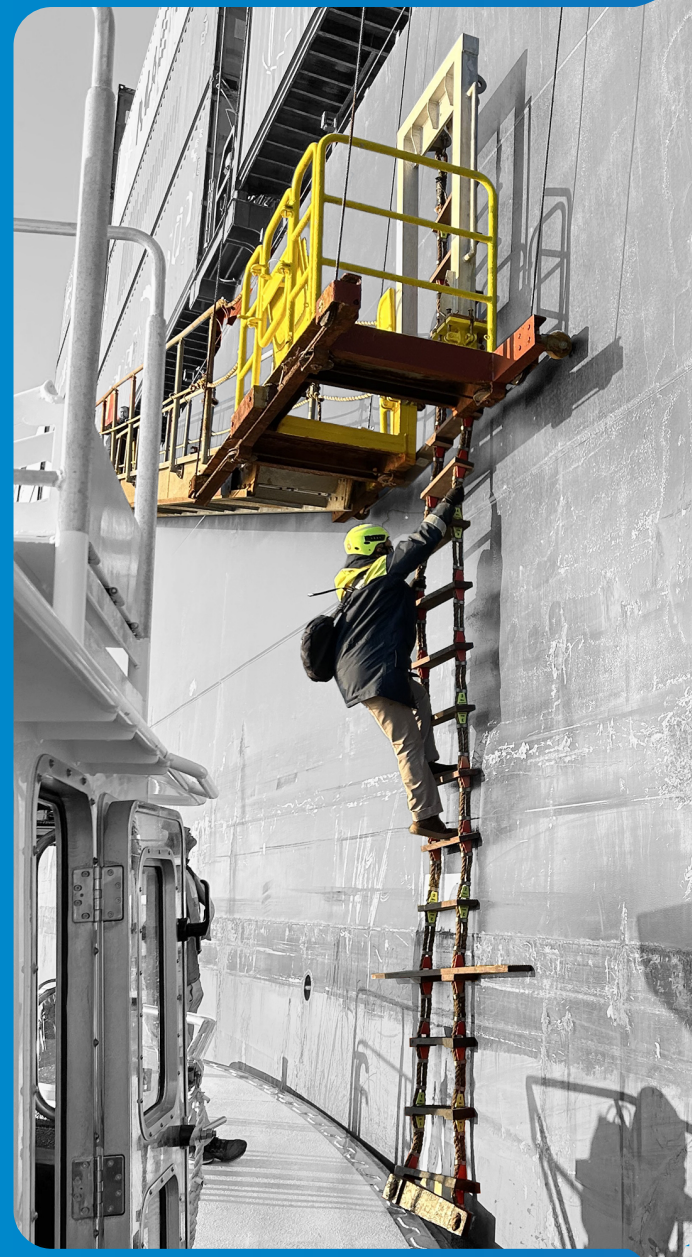


# Point of Access Greater than 9 Meters Combination Arrangement

# Point of Access Greater Than 9 Meter Trap Door Arrangement

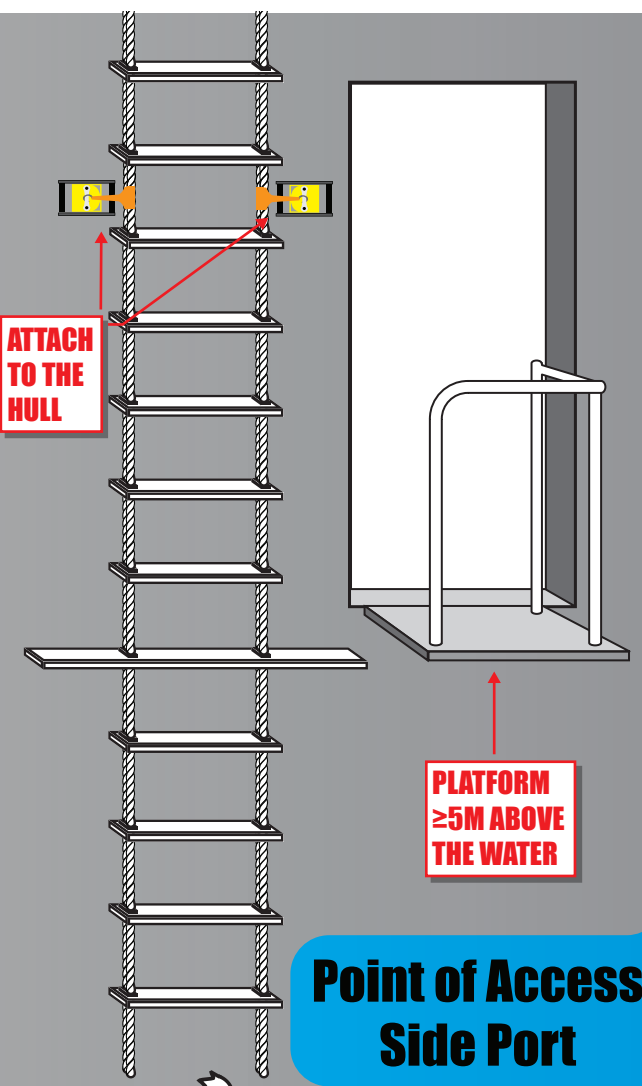


# Pilot Transfer Arrangements



**DISCLAIMER:** The guidance in this pamphlet is not a substitute for applicable domestic and international legal requirements, nor is it itself a rule or regulation. It is rather intended to provide pilot transfer arrangement guidance for pilots and is not intended to nor does it impose legally binding requirements on any party.

**RIGHT TO REFUSE**  
Where a pilot suspects the pilot transfer arrangement provided is non-compliant, they should inform the Master and refuse to use the arrangement until it is made compliant.



## Point of Access Side Port

### ROLLING HITCH

ROLLING HITCH TO BE USED AS A METHOD OF SECURING THE SIDE ROPES AT ANY INTERMEDIATE LENGTH